

The image features a dark blue background on the left side, which contains the UTSA logo and event information. On the right side, there are two circular inset images. The top circle shows a modern building with a glass facade and a large fountain in the foreground. The bottom circle shows a city skyline with a prominent skyscraper and a large tree in the foreground. The text is white and positioned on the left side of the image.

UTSA®

The University of Texas
at San Antonio™

Charting UTSA's Future

College of Sciences
Advancement Council
March 29, 2018

The left side of the slide features a vertical column of decorative wavy lines. These lines are primarily blue, with two distinct orange lines interspersed. The lines vary in length and are positioned at different heights, creating a rhythmic, water-like pattern.

UTSA

UTSA as a Catalyst for San Antonio

San Antonio's University



**Boston has eight
Carnegie R1 universities**



Boston has eight Carnegie R1 universities



Imagine in 10 Years...

- NRUF/Carnegie R1
- > 45,000 students
- > 2,000 faculty
- \$400M in research expenditures
- Endowment of \$500M
- 300 endowed chairs/professorships
- A destination of choice for students
- Urban-serving
- Hispanic-thriving
- 3M square feet of new construction across 3 campuses
- 25 annual faculty prestigious awards
- 15 faculty in the national academies
- Commensurate athletics conference membership

The left side of the slide features a vertical column of decorative wavy lines. These lines are primarily blue, with two distinct orange lines interspersed. The lines vary in length and are arranged in a way that creates a sense of movement and depth.

UTSA®

Six Themes to Chart our Course



**1. A Great
Multicultural
Discovery
Enterprise**



**2. An
Exemplary
Urban-Serving
University of
the Future**



**3. World
Engaged**



**4. Fostering
Exceptional
Student
Experiences**



**5. Cultivating
the Excellence
of our People**



**6. Operational
and
Infrastructure
Excellence**



Discovery
Enterprise

Urban
Serving

World
Engaged

Student
Experience

People
Excellence

Process
Excellence

Initiatives

Presidential | Strategic | Tactical | Operational

Projects

Project Teams | Project Management | KPIs | OPIs

The left side of the slide features a vertical column of decorative wavy lines. These lines are primarily blue, with two distinct orange lines interspersed. The lines vary in length and are arranged in a staggered, vertical sequence.

UTSA®

Peer Models of Excellence

Peer Models of Excellence

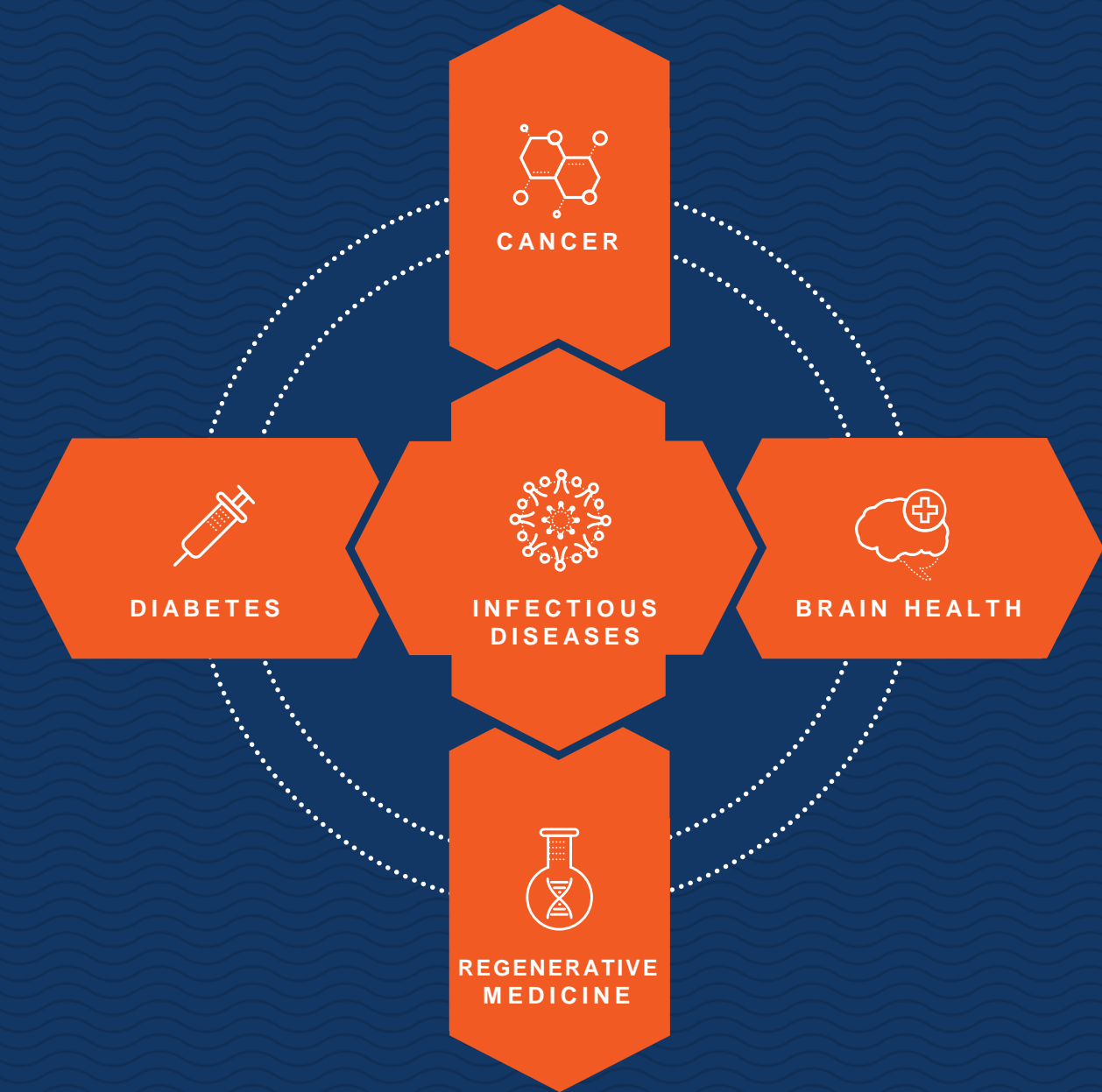




UTSA®

Positioning UTSA as a National Leader in Biomedical Research & Development

Alignment with
San Antonio's
Bioscience Sector



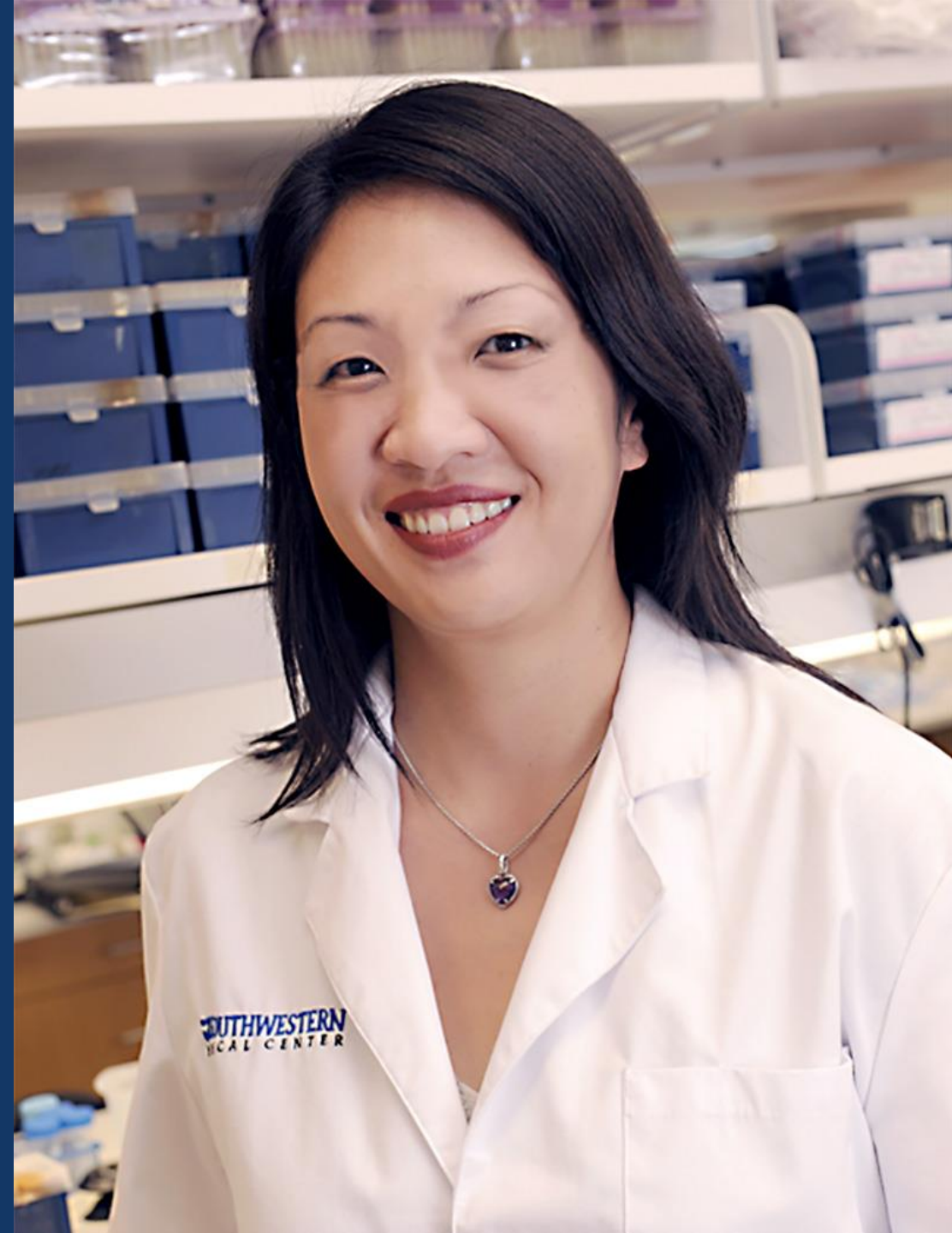


Dr. Jenny Hsieh

Semmes Foundation Chair in Cell
Biology

Professor of Biology

Fighting Brain Disease



A New Partnership Emerging

UTSA



UT Health
San Antonio



**TEXAS BIOMEDICAL
RESEARCH INSTITUTE**



SOUTHWEST RESEARCH INSTITUTE



BAMC

San Antonio has

3,300+


MDs and PhDs

and more than

\$1 billion

in federal R&D
expenditures



A female scientist with dark hair, wearing a white lab coat, clear safety goggles, and blue nitrile gloves, is focused on using a white and blue pipette. She is holding the pipette with her right hand, and the tip is positioned over a rack of test tubes. The test tubes in the foreground are filled with liquids of various colors, including pink, orange, and yellow. The background is a soft-focus laboratory environment. The right side of the image features a dark blue overlay with white text.

San Antonio and its population genomics is the future of medicine

Precision Medicine

Drug Discovery and Delivery

Regenerative Medicine

Obesity

Neurodegenerative Disorders

Infectious Diseases



The left side of the slide features a vertical column of decorative wavy lines. These lines are primarily blue, with two distinct orange lines interspersed. The lines vary in length and are arranged in a staggered, vertical sequence.

UTSA®

Creating a Cyber Ecosystem at UTSA



UTSA's Current & Future National Security Portfolio

Cybersecurity
& Cloud Computing

Counter Terrorism

Election Security

Cyber Attack/
Deterrence & Policy

Infectious Diseases
& Biological Threats

Military Health
& Wellness

Demographic Methods
& Trends

Governance & Policy

Emergency Management
& Communications

Border & Refugee Issues

Advanced Materials

Nanotechnology

Critical Infrastructure
Protection

Robotics & UAVs

Analytics

High Performance
Computing

Artificial Intelligence

Machine Learning

Data Visualization

High Tech Intelligence



Dr. Nicole Beebe

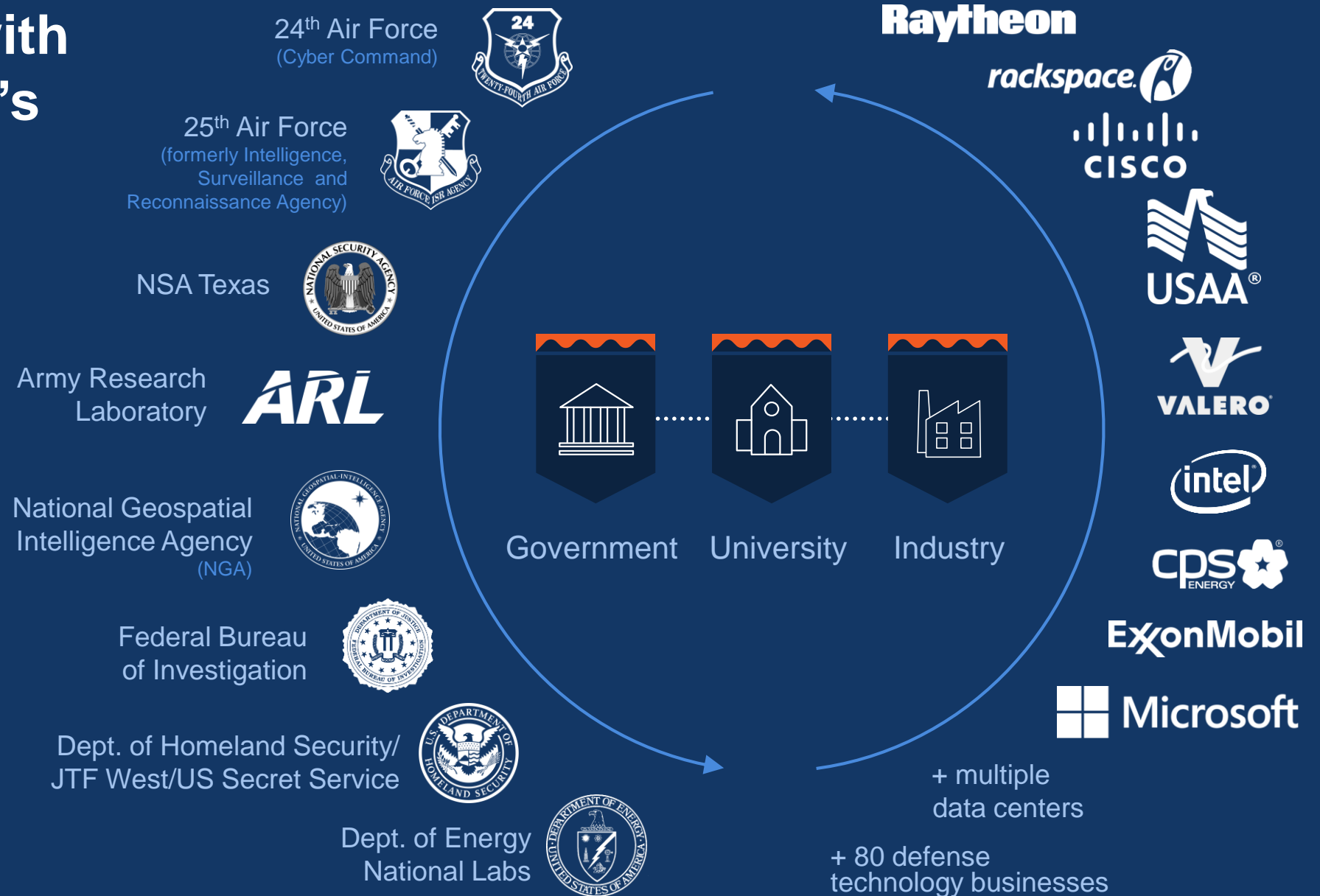
Melvin Lachman Distinguished
Professor in Entrepreneurship

Associate Professor of Information
Systems and Cyber Security

A Leader in the
Cybersecurity Revolution



Alignment with San Antonio's National Security Landscape



100,000
square feet

5 floors

Computational Research Building

UTSA

IPSECURE

Microsoft

Loki Labs

Raytheon

BUILD SEC
FOUNDRY

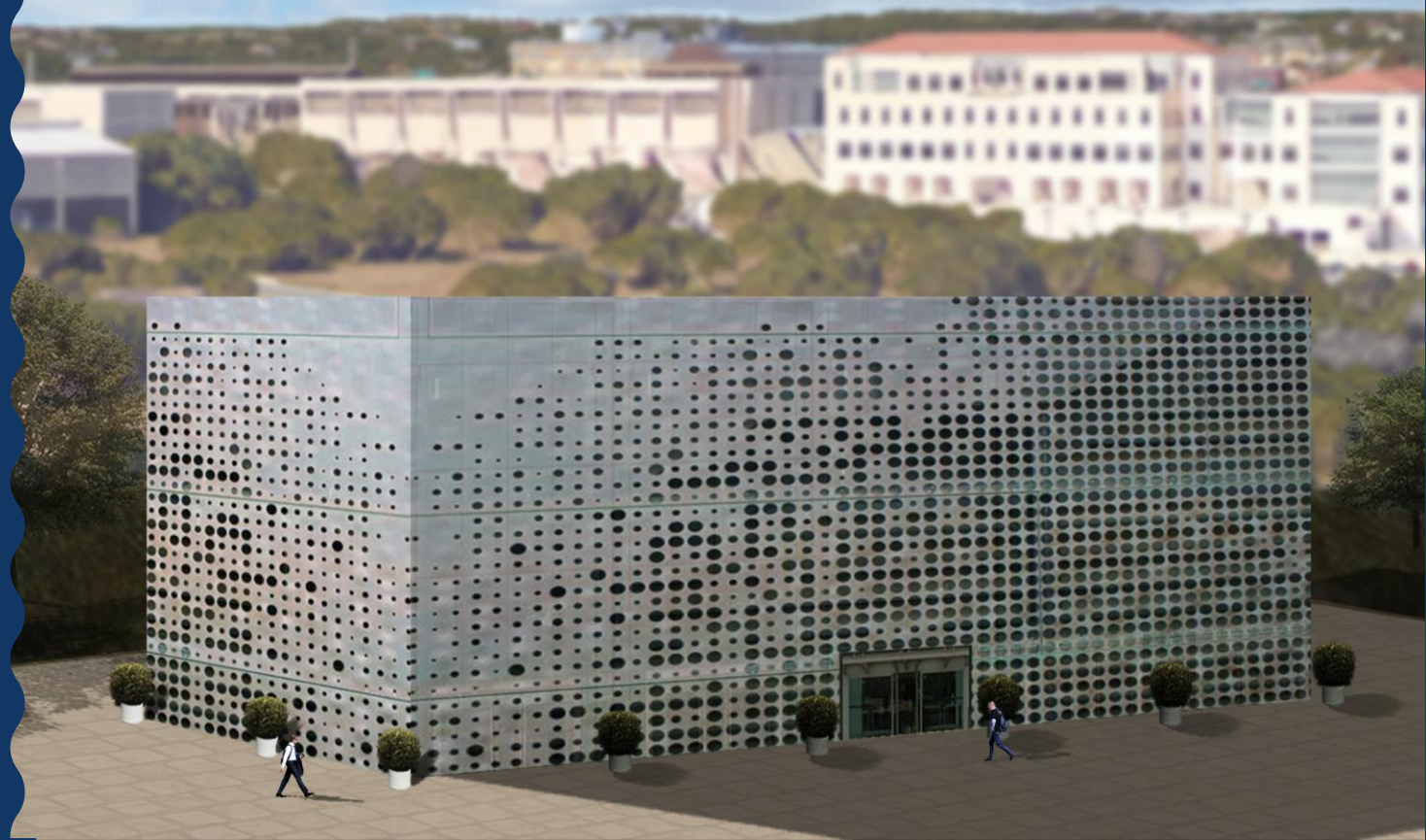
LGS
INNOVATIONS

noblis

POLARIS
— ALPHA —

IOMAXIS

*In late stage discussions
with 7 additional companies*





A Visionary Downtown Campus

An aerial photograph of a city street grid. A proposed modern building complex is overlaid on the image. The complex consists of several interconnected rectangular buildings with green-tinted glass facades and brown structural elements. Some buildings have flat, light-colored roofs, while others have red-tiled roofs. The complex is situated between a multi-lane highway at the bottom and a residential area with smaller buildings and parking lots at the top. A central courtyard with trees and a circular plaza is visible within the complex. A dark blue circular graphic with a white wavy bottom edge is positioned in the lower-left corner, containing the text "A New Vision".

A New
Vision

The left side of the slide features a vertical column of decorative wavy lines. These lines are primarily blue, with two distinct orange lines interspersed. The lines vary in length and are arranged in a staggered, vertical sequence.

UTSA®

School of Data Science

School of Data Science

Centralizing UTSA's talent and resources in cyberscience, data science and data management into one powerful new school.



Columbia University
Data Sciences Institute

Department of
Computer Science



Department of Electrical &
Computer Engineering



Department of Information
Systems & Cyber Security



The Center of Infrastructure
Assurance & Security



The Cyber Center for
Security and Analytics



The Institute for
Cyber Security



The Open Cloud
Institute



The Texas Sustainable
Energy Research Institute

The left side of the slide features a vertical column of decorative wavy lines. These lines are primarily blue, with two distinct orange lines interspersed. The lines vary in length and are positioned at different heights, creating a dynamic, water-like effect.

UTSA®

School of Entrepreneurship & Technovation

School of Entrepreneurship & Technovation

Nurturing the big ideas that
transform our world.



University of Utah
Lassonde Entrepreneur Institute

Degree programs and
professional certificates



Prototype labs



Entrepreneurship
incubators



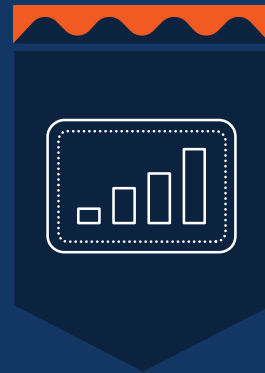
Creative spaces for
startups, collaboration



Living/learning
facilities



Meetups and
workshops



Business model
competitions



Commercialization
programs



Innovation
bootcamps



UTSA®

Urban Education Institute

Urban Education Institute

Tackling the grand challenges surrounding urban education through innovative partnerships and clinically rich approaches to school professional preparation.



University of Chicago
Urban Education Institute

Urban Education Institute



High quality research
impacting education
policy and practices



Development of a
University Lab School



Partnerships
with K-12 and
community
organizations



Leadership
development



Residential experiences
for undergraduate and
graduate students,
connecting theory
to practice



Policy studies

The left side of the slide features a vertical column of decorative wavy lines. These lines are primarily blue, with two distinct orange lines interspersed. The lines vary in length and are arranged in a staggered, vertical sequence.

UTSA®

Urban Science Institute

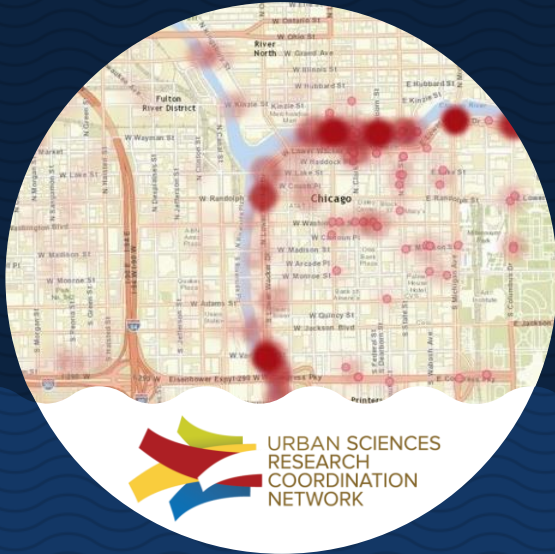
Urban Science Institute

Driving public policy and the
future of San Antonio.



New York University
Center for Urban Science & Progress

University of Chicago
Urban Center for
Computation and Data



MIT
Senseable City Lab



ORNL
Urban Dynamics
Institute



NYU
Center for Urban Study
and Progress



Let's Chart the Future Together

UTSA[®]

The University of Texas
at San Antonio[™]

